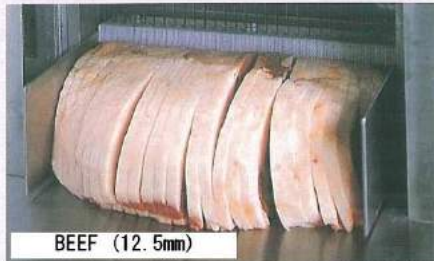


EASY OPERATION! SLICE INSTANTLY!



BEEF (12.5mm)



ROAST BEEF (2.0mm)



RAW LIVER (12.5mm)



BACON (2.0mm)



ROUND HAM (2.5mm)



PORK CHOPS (15mm)

HI-SPEED INSTANT SLICE

Fresh and processed meat up to a width of 355mm is cut instantly from a large lump. It is able to feed continuously and slice products in a pile depending on the products you may slice.

PARALLEL&UNIFORM CUTTING FACE

The unit cuts parallel from the edge to the other edge. Slices are even as the cutting face is sharp with no irregularities. Loss at the edges is less.

SANITARY

No sliced face is exposed to air due to the instantaneous cutting process. It is hygienic with less risk of secondary contaminations.

SLICE THICKNESS: 2.0mm to 30.0mm

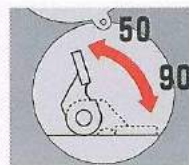
Thickness Variation

2.0·2.5·5.0·7.5·10.0·12.0·15.0·30.0mm, and so on...

AUTO-STOP MECHANISM



When the pusher plate touches to the product, it will stop automatically at that point. Thanks to the Auto-Stop Mechanism, the pusher gives to the product the very suitable pressure for slicing.



The machine has Protective Mechanism against breakage of Pusher Plate and Presser Plate, depending on the height of Presser Plate, by just set the lever as following the drawing on the left.

AUTOMATED FEEDING SYSTEM

Hydraulic automatic feeding system is incorporated in both the product feed and upstroke press mechanism.

INTERLOCK MECHANISM



When you open a clear cover of feeding part, the machine stop automatically for your safety. Close the cover, and machine will start operation again.

Also, blade cover has same interlock mechanism for the safety operation.

EASY TO SEE PRODUCT DURING SLICE

The cover of feeding part is clear, so you can see products during slice.

SAFETY

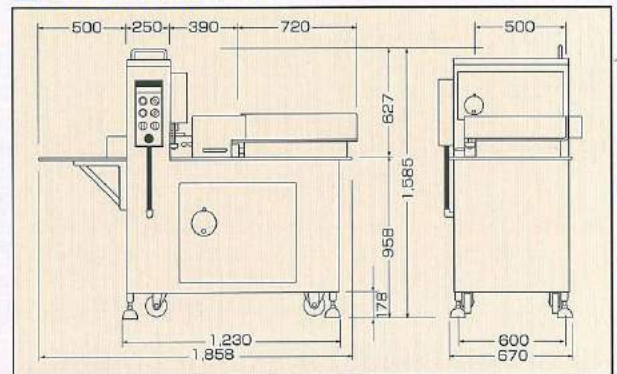
- * Cutting table is unaccepted entering your hands by safety system.
- * For the emergency, machine will stop immediately by emergency button.

SPECIFICATIONS

HS-360	
Dimensions	W670 × D1860 × H1500 (mm)
Weight	650kg
Blade motor	3P/200V 3.7kW
Hydraulic motor	3P/200V 0.75kW
Slicing capability	Meat: 1800kg/hr Ham: 360 block / hr
Slice dimensions	W355 × L400 × H175 (mm)
Slice thickness	Min 2.0mm Max. 30mm (Flexible setting)
Feeding method	Automatic
Stroke	400mm
Sliced food products	Fresh meat / ham / sausage/ bacon / processed meat / fish sausages / other products

* The above specifications may change without prior notification subject to product improvement.

DIMENSIONS (mm)



FM 66207/ISO 9001:2000



NANTSUNE CO., LTD.

Headquarters Plant

17-41, 4-chome Ohi, Fujidera City, Osaka 583-0008, Japan

Tel : +81-72-939-1500 Fax : +81-72-939-1504